



Large Selection of designs & colors
for your promotion or daily use

Drinkware



144

W SL

Stainless Steel Bottle

Sublimation coated steel Bottle
Material : Stainless Steel
Size : 70 x 270 mm | Capacity : 500 ml

Printing Options : 



TM-009

BK R BL

Stainless Steel Bottle

Matte texture bottle.
Material : Stainless Steel
Size : 70 x 270 mm | Capacity : 500 ml

Printing Options : 



TM-004

SL CL BL

Travel Bottle

Transparent Plastic Bottle with
Stainless Steel Cap & Base
Material : AS Plastic & Stainless Steel
Size : 70 x 270 mm | Capacity : 750 ml

Printing Options :  



140

W BK R BL GR

Promotional Sports Bottle

Matte texture aluminum body with carabiner clip
Material : Aluminum | Size : 73 x 260 mm | Capacity : 750 ml

Printing Options :



TM-008

W BK R BL GR

Promotional Sports Bottle with Sleeve

Sports bottle. Glass and stainless steel with softshell coloured sleeve.
Material : Glass & Steel | Size : 65 x 225 mm | Capacity : 500 ml

Printing Options :



DRINKWARES



Innovative Lid with integrated straw.



Silicone Band to match the cap.

TM-007

UAE GY BK R BL GR

Promotional Travel Bottle with Straw.

Material : Tristan Plastic with Silicone.
Product Size : 75 x 230 mm | Capacity : 750 ml

Printing Options :



Enjoy the health benefits of
Infused water everywhere you go!

TM-002

W BK R BL

Promotional Bottle with Fruit Infuser

Simply pop in your favourite fruits & you're good to go -so let this be your daily water bottle! This design comes with a foldable handle and nozzle for easy drinking! Product Size : 68 x 245 mm | Capacity : 700 ml

Printing Options :





Glass Material Bamboo Material Eco-inspired Sleeve.



TM-032-BM

Glass Bottle with sleeve

Nature line bottle in combination of bamboo and glass materials. 550 ml capacity, with screw on bamboo lid and an elegant, eco-inspired sleeve. Carrying handle in nature color and presented in an attractive, eco design box. Product Size : 63 x 225 mm | Capacity: 500 ml.

Printing Options :



*Nature
Friendly*



DRINKWARES



Optional
packing



TM-011

Bamboo Flask

Double wall stainless steel insulating vacuum flask with bamboo cover and additional tea infuser. Product Size : 70 x 205 mm | Capacity: 450 mL.

Printing Options :



Optional
packing



TM-014

Glass & Bamboo Flask

Double wall in high borosilicate glass bottle and bamboo lid with tea infuser. Product Size : 70 x 230 mm | Capacity: 500 mL.

Printing Options :





TM-012

Bamboo Flask

Double wall stainless steel insulated vacuum flask with bamboo outer cover. Product Size : 65 x 255 mm | Capacity: 430 mL.

Printing Options :



TM-013

W BK

Stainless Steel and Bamboo Flask

Double wall stainless steel insulating vacuum flask with lid in bamboo and carry handle. Product Size : 70 x 255 mm | Capacity: 600 mL.

Printing Options :



Optional
packing



VIP
High Quality

**Matte Black
Double Wall
Stainless Steel Bottle**



Optional packing

Cardboard material
Size : 12.5 x 31.5 x 9.2 cm



TM-015-BK

Black Stainless Steel Bottle

A Matte black texture double wall stainless steel bottle, Silver twist top lid holds a silicone ring to prevent leakage. Has a 304 stainless steel inside material. Packed in a white cardboard box.
Product Size : 80 x 260 mm | Capacity : 500 ml

Printing Options :





TM-003

CL BK GR BL

A5 Memo Water Bottle

A5 Memo water bottles are designed to fit stylishly into handbags, backpacks, laptop bags and more. Slim design to fit easily.
Material : AS Plastic | Product Size : 130 x 213 x 32 mm | Capacity : 420 ml

Printing Options :



139

W SL

15 oz Stainless Steel Bottle

Water bottle with integrated straw lid and Second cap with carabiner clip, 100% dishwasher safe. Perfect for outdoor use or in sports.
Product Size : 80 x 105 mm | Capacity : 400 ml

Printing Options :







TM-005

SL W BK R BL

Double wall Travel Mug with clear lid

Plastic inner wall with coloured stainless steel outer wall & a clear lid.
Material : Stainless Steel & AS Plastic
Product Size : 75 x 190 mm | Capacity : 500 ml

Printing Options:  



TM-001

Promotional Travel Mug

Double wall mug with clear outer wall to display the insert paper design, leak proof cap, suitable for office, cars, and for your everyday use.
Material : AS Plastic. Product Size : 70 x 180 mm

Printing Options: 



TM-006

Promotional Stainless Steel Travel Mug

Stainless steel inner wall with a clear outer wall to display the insert paper design, leak proof cap. Material : AS Plastic & Stainless Steel.
Product Size : 85 x 195 mm | Capacity: 470 ml.

Printing Options: 



ECO Friendly Cups

Made from Wheat Straw & Bamboo Fiber



TM-020

W BK R BL GR

Wheat Straw Cup with Silicone lid and band

A combination of wheat straw and PP material. Cup in natural color with silicone center band and lid in matching color. Compostable and biodegradable. Material : Wheat Straw, PP & Silicone
Product Size : 95 x 115 mm | Capacity : 350 ml

Printing Options :



TM-021

W BK R BL GR

Bamboo Fiber Cup with Silicone lid and band

A combination of natural bamboo fibers and PP material. Cup in grey color with silicone center band and lid in different colour. Compostable and biodegradable. Material : Bamboo Fiber, PP & Silicone
Product Size : 95 x 115 mm | Capacity : 350 ml

Printing Options :



Nature Friendly

TM-023-BM

Travel Cup with Bamboo lid

Single wall tumbler in 65% PLA corn and 35% wheat straw with bamboo lid and cork grip. PLA (poly-lactic acid) is an 100% bio-based alternative for conventional plastics. It is made from fermented plant starch which is free of toxics. Product Size : 85 x 130 mm. Capacity : 420ml

Printing Options :



Made from



Bamboo material



Wheat Straw material




Cork material



TM-030**Travel Cup with Bamboo lid**

Double-walled borosilicate glass travel cup with bamboo lid. Cup with a capacity up to 320 ml, ideal for cold or hot liquids, with a lid with silicone insulation that facilitates the transport of the glass avoiding splashes. Microwave and dishwasher safe, when lid is removed.

Printing Options:  

**TM-031****Travel Cup with Bamboo lid & Spoon**

Cup is made from borosilicate glass, offering exceptional resistance and durability. Also includes a lid and spoon with each mug, made from polished bamboo and presented in an cardboard box. Capacity : 400ml

Printing Options:  



DRINKWARES



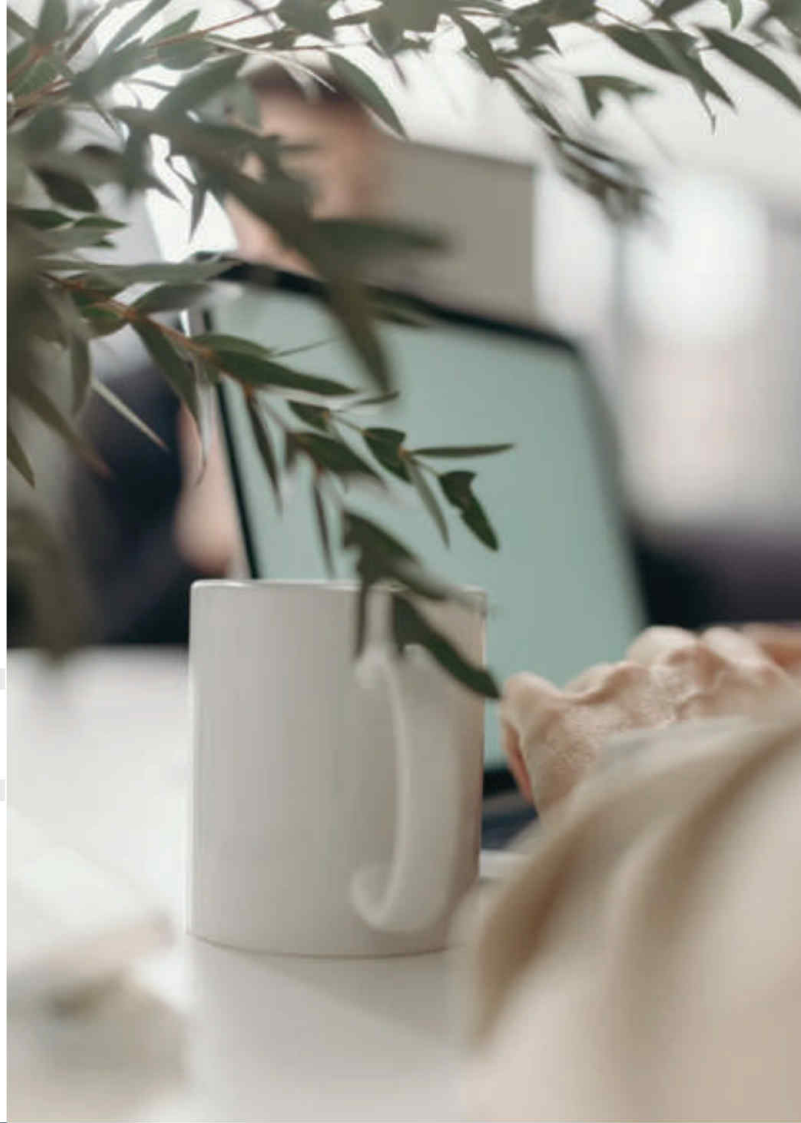
MATTE

147-M

11 oz White Sublimation Ceramic Mug - Matte Finish

White ceramic mug with matte finish for your full color sublimation printing. Can also be packed in a presentation cardboard box.
Product Size : 80 x 95 mm | Capacity : 325 ml

Printing Options :



GLOSS

147-D

11 oz White Sublimation Ceramic Mug - Glossy Finish

White ceramic mug with glossy finish for your full color sublimation printing. Can also be packed in a presentation cardboard box.
Product Size : 80 x 95 mm | Capacity : 325 ml

Printing Options :



**167-BK-M****11 oz Color Changing Mug (Semi-Matte Black Finish)**

Our color changing mugs look simple enough at first glance. But pouring any hot drink into the heat sensitive glossy black ceramic mug reveals a special surprise. Product Size : 80 x 105 mm | Capacity : 325 ml

Printing Options: 

Colour Changing Ceramic Mugs

**Just pour hot beverages to
reveal your full color designs.**



①

Original Color

②

Pour in Hot Beverages
Changing Stage

③

Design Revealed



175-S

**11 oz Glossy Finish Silver
Sublimation Ceramic Mug**

Product Size : 80 x 98 mm
Capacity : 325 ml

Printing Options : 



175-G

**11 oz Glossy Finish Gold
Sublimation Ceramic Mug**

Product Size : 80 x 98 mm
Capacity : 325 ml

Printing Options : 



172

**11 oz Glossy Black Ceramic Mug
with Printable Area**

Black background makes the colors of the
imprinted image even more vibrant.
Product Size : 80 x 98 mm
Capacity : 325 ml

Printing Options : 



151-BK

13 oz Matte Black Ceramic Mug with Lid & Cork material base

Product Size : 88 x 110 mm
Capacity : 385 ml

Printing Options :



169

10 oz Curve Edges White Glossy Finish Sublimation Ceramic Mug

Product Size : 75 x 105 mm
Capacity : 295 ml

Printing Options :



155

10 oz White Glossy Finish Sublimation Ceramic Mug

Product Size : 70 x 105 mm
Capacity : 295 ml

Printing Options :



148

15 oz White Glossy Ceramic Mug

Product Size : 115 x 85 mm
Capacity : 440 ml

Printing Options :



DRINKWARES



145

22 oz White Beer Mug with Gold Rims

The ultimate glass for enjoying a refreshing cold one. Big capacity means you can take your time enjoying your favorite drinks slowly.
Product Size : 75 x 170 mm. Capacity : 650 ml

Printing Options : 

149

20 oz White Ceramic Beer Mug

Come with easy to hold handle and are made of ceramic material. They can be the center of attraction at any party or in a restaurant.
Product Size : 78 x 160 mm. Capacity : 590 ml

Printing Options : 

159-F

16 oz Frosted Sublimation Mug

Enjoy your favorite ice cold beverage in our durable lead free, semi-translucent printable glass with classic feel of your mug.
Product Size : 80 x 150 mm. Capacity : 470 ml

Printing Options : 



182

1.5 oz Short Glass

Conical shape glass with a white printable surface and elegant golden rim.
Product Size : 45 x 60 mm. Capacity : 44 ml

Printing Options : 





146N

BK OR R BL GR

**White Ceramic Mug
with Silicone Cap & Base**

Ceramic mug with a heart shaped handle
& matching color of silicone cap to avoid
leaks & non-slip silicone base.
Product Size : 85 x 125 mm

Printing Options : 



Match your colours on our ceramic mugs.



168

BK R BL GR

**11 oz Two Tone
Ceramic Mug**

White Ceramic Mug with coloured handle
& inside. Product Size : 80 x 98 mm
Capacity : 325 ml

Printing Options : 





180

4 oz Ceramic Saucer Tea Cup

Set of white glossy finish ceramic cup, saucer and a spoon.
Product Size : 50 x 80 mm. Capacity : 120 mL 1 pack : 36 pcs. GW : 13 kg

Printing Options :



154

6 oz Ceramic Tea Cup

White glossy finish ceramic cup. Product Size : 80 x 50 mm.
Capacity : 180 mL 1 pack : 48 pcs. GW : 12 kg

Printing Options :



191

11oz White Ceramic Mug with a Heart-shaped Handle.

White mug with glossy finish, Delivered in set of two mugs.
Perfect gift for couples in love. Capacity : 325 ml each

Printing Options :



170

BK BR BL P R OR Y GR

11 oz Two Tone Ceramic Mug with Spoon

White mug with a colorful parts: interior, handle and spoon.
Product Size : 80 x 102 mm | Capacity : 325 ml


Printing Options : 



COA-01

Black Slate Coaster

Slate is a natural stone and therefore features beautifully natural variations in color and texture. These heavy slate coasters make an impressive promotional gift. Product Size : 10 x 10 cm.

Printing Options :  



COA-02

Cork Tea Coasters

Heat insulation, used to protect your table surface. Perfect for daily use and as tableware decoration specification. Durable and practical. Product Size : 10 cm (dia) / 5 mm (thickness)

Printing Options : 

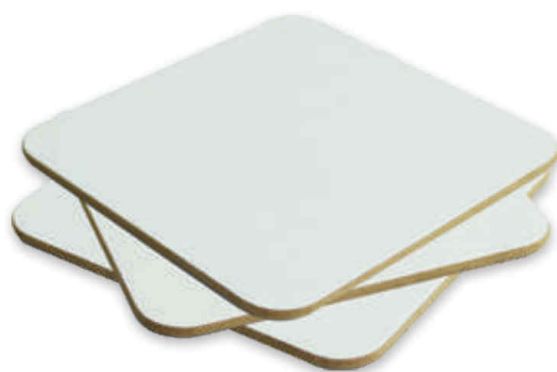


224

Hardboard Tea Coaster

Square shaped with rounded corners. Made from Hardboard material.
Size : 10 x 10 cm | 1 Pack : 120 pcs.

Printing Options :



220-F

Round Glass Tea Coaster

Size : 10 x 10 cm | 1 Pack : 120 pcs.

Printing Options :



219-F

Square Glass Tea Coaster

Size : 10 x 10 cm | 1 Pack : 120 pcs.

Printing Options :



224-S

Wooden Coaster Base

Stores a set of 4pcs. Tea coasters.
Size : 7.8 x 6.5 cm | 1 Pack : 280 pcs.

Customized PU Leather Tea Coasters

for full colour printing
or debossing.





LUN-WSB

Wheat Straw Double Lunch Box with Bamboo Top

Eco-friendly lunchbox made of 50% PP and 50% wheat straw. With a matching bamboo lid and elastic closure strap. A beautiful combination of natural, biodegradable materials. Product Size : 18.5 x 10.5 x 10.5 cm.

Printing Options :   



LUN-WS

Wheat Straw Lunch Box

Lunch box made from a combination of wheat straw & PP material. BPA free material, and suitable for dishwasher, microwave oven and freezer. Includes an band with a fork and a knife. Product Dimension : 16.5 x 12 x 5.5 cm

Printing Options :  



LUN-01

W BL DP

Promotional Lunch Box

Lunch box with two compartment. Fork & knife included. Made from PP material, BPA Free. Volume : 1500 ml/52 oz. | Size : 23 x 16 x 7 cm

Printing Options :  

